

MONTHLY MEMBERSHIP PROGRESS REPORT

District N 2

Results as of: 4/30/2025

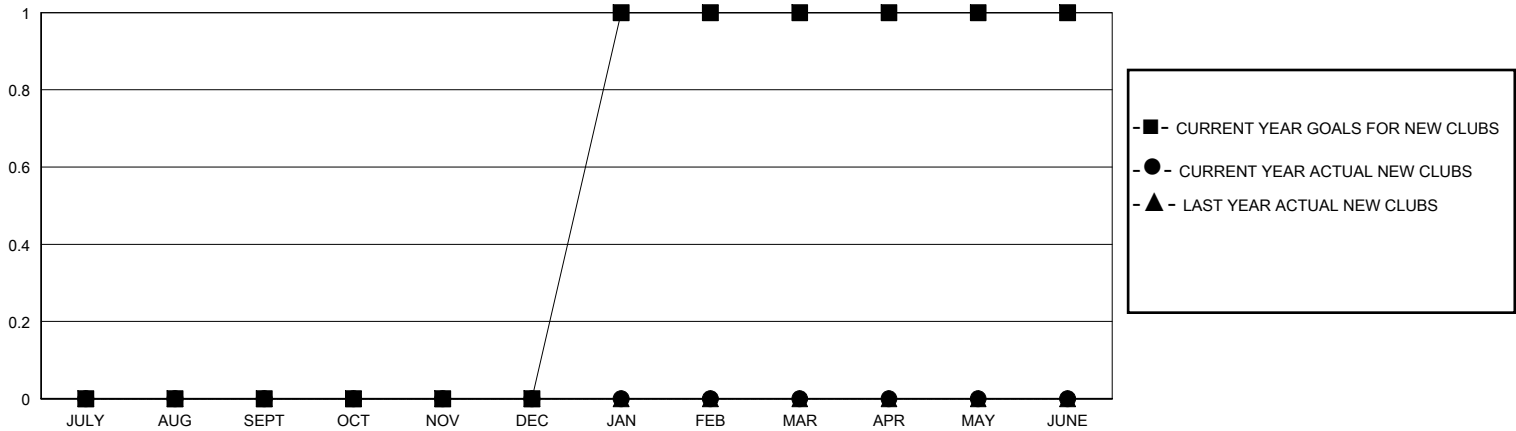
GMT:

LOCATION NOVA SCOTIA

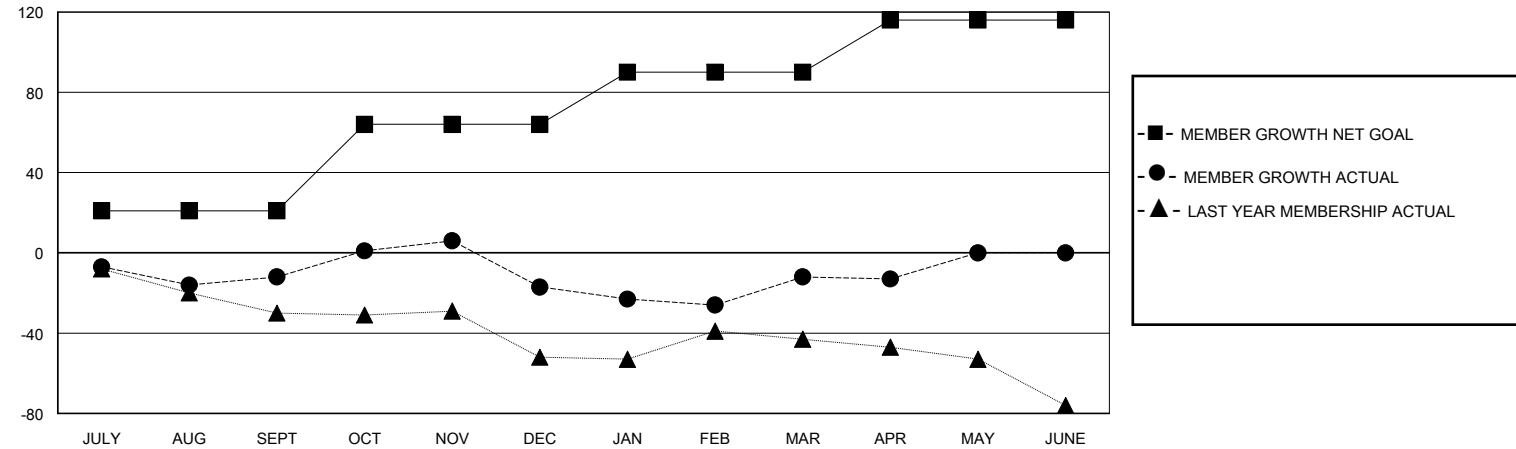
GMT CA

Clubs				Members			
RESULTS FOR 2024-2025				RESULTS FOR 2024-2025			
QUARTER	NEW CLUB GOAL	NEW CLUBS	DROPPED CLUBS	QUARTER	MEMBER GROWTH NET GOAL	MEMBER GROWTH ACTUAL	DROPPED MEMBERS ACTUAL (including transfers)
JULY/AUG/SEPT	0	0	0	JULY/AUG/SEPT	21	31	35
OCT/NOV/DEC	0	0	1	OCT/NOV/DEC	43	75	72
JAN/FEB/MAR	1	0	1	JAN/FEB/MAR	26	55	39
APR/MAY/JUNE	0	0	0	APR/MAY/JUNE	26	12	13

GOALS AND ACTUAL NEW CLUBS CUMULATIVE



GOALS AND ACTUAL MEMBERS CUMULATIVE



DROPPED CLUBS: 2	43 CLUBS OF 68 ADDED 1 OR MORE NEW MEMBERS	<u>GENDER DISTRIBUTION</u> MALE 908 (57.07%) FEMALE 682 (42.87%)
<u>DROPPED MEMBERS</u> DECEASED 23 CLUB CANCELLED 8 OTHER 126 TOTAL 157	<a href="#">CLICK HERE FOR CUMULATIVE MEMBERSHIP DATA</a>	TOTAL FAMILY UNIT MEMBERS 0 FAMILY MEMBERS PAYING HALF DUES 0